

**REESTABLISHMENT PLAN  
THIRTY-SEVENTH JUDICIAL DISTRICT OF PENNSYLVANIA  
MAGISTERIAL DISTRICT COURTS 37-3-01, 37-4-01, 37-2-01, 37-4-03, 37-4-93  
WARREN COUNTY AND FOREST COUNTY**

The Supreme Court of Pennsylvania mandates a review of the existence of and boundaries for magisterial district courts in the Commonwealth of Pennsylvania. President Judges have the duty to review the caseload, workload, and overall scope of the magisterial districts. A President Judge must make a recommendation to reestablish, realign or eliminate magisterial districts.

Some of the considerations regarding reestablishment require an examination of statistics other than the weighted caseload for example Warren County has weekly Central Court sessions where a Magisterial District Judge (hereinafter "MDJ") sits at the Courthouse in a specially designated courtroom located in the lower level of the Courthouse. The MDJs share this responsibility on a rotating basis. It should be noted that all scheduling and rescheduling of Central Court cases are done strictly by the 37-4-01 MDJ office.

Through the years, MDJs have also been active in several of the Court of Common Pleas initiatives involving problem solving courts. They actively participate with our high school students in a Youth Court for juvenile offenders. This court has been running since 2005. Warren County was one of the first rural counties to implement this program and is pleased with the demonstrated success we have had with this program. The MDJs have also actively implemented initiatives involving truancy which include utilizing an MDJ to develop weekly accountability for truant children as well as parents of truant children or parents with drug and alcohol issues who have no criminal charges. MDJs have been utilized for Treatment Court, a problem solving court where parties with drug and alcohol issues, mental health issues, and veterans who have criminal charges (who have failed previous efforts at rehabilitation) agree to be seen weekly by the court. While the treatment court is primarily the responsibility of the Court of Common Pleas, there are inevitably scheduling conflicts that require the assistance of an MDJ. Thus, utilizing MDJs to assist with the cases is necessary and of importance to our rural community.

As Warren County is 889 square miles, it is important to have at least one MDJ office located outside of the city of Warren. MDJ office 37-2-01 is located in the city and 37-3-01 is located within a mile from the city. The 37-4-01 office which is located in Youngsville remains a good central location. When the Court examined staffing in all three MDJ offices in Warren County, the Court recognized that all three offices have two full-time staff. In order to reduce the number of MDJs and run efficiently, the Court observed that most offices would need three full-time staff per office site. Evaluating the two current facilities utilized by the MDJs in Warren and North Warren, neither office could house a third staff member or be reconfigured in a way to house a third staff member. The Warren County

Commissioners have not been able to locate alternate spaces for housing the offices. A preliminary investigation in Warren County finds no suitable office space at this time.

The Court examined the availability of internet services to Warren County and found that the majority of the county does not have what the FCC considers as broadband. Warren County has historically lagged behind other counties when it comes to the availability of reliable technology. Attached is a map that shows that the citizens of the county lack the ability to connect to the internet in most areas. As a result, the majority of the public would need to physically visit the MDJ offices. Due to the large geographical area that the county covers and lack of public transportation, closing any office would cause hardship to Warren County citizens.

The Court also analyzed the historical implications of realignment by referring to the last three realignment plans for the court. In 1992, the Honorable Robert L. Wolfe consolidated a number of satellite MDJ offices to address the efficiency of the system. In 2002, the Honorable Paul H. Millin reduced the number of MDJs in Warren County by eliminating the Sheffield office and consolidating the satellite office in Tidioute with the Youngsville office. Ultimately, the Sheffield office closed in 2008 and the consolidation of the Tidioute office took place in 2011 when the Youngsville office was relocated. In the last reestablishment, the Youngsville office had the smallest weighted caseload according to the statewide statistical information, the Court achieved a better distribution of cases by increasing its township responsibilities by adding Pleasant Township to its caseload. The Court recognizes that the caseload is as evenly distributed as possible given the geography of the county.

Magisterial District Courts 37-4-03 and 37-4-93 have one Magisterial District Judge serving all of Forest County, which covers 430 square miles. Magisterial District Court 37-4-93 is located in the Forest County Courthouse which is centrally located in the county. Magisterial District Court 37-4-03 is located in the southeast corner of the county in Jenks Township which is the most populated area. Both offices are essential to the district in order to serve the public in this rural community which lacks sufficient public transportation and has a poverty level of 14.1%.


For the above reasons, I recommend that District Court 37-2-01 be reestablished to serve all of Warren County, encompassing Cherry Grove Township, Sheffield Township, and the City of Warren.

I recommend that District Court 37-3-01 be reestablished to serve all of Warren County, encompassing Clarendon Borough, Pine Grove Township, Conewango Township, Sugar Grove Borough, Sugar Grove Township, Farmington Township, Glade Township, Elk Township, and Mead Township.



I recommend that District Court 37-4-01 be reestablished to serve all of Warren County, encompassing Bear Lake Borough, Brokenstraw Township, Columbus Township, Deerfield Township, Eldred Township, Freehold Township, Limestone Township, Pittsfield Township, Pleasant Township, Southwest Township, Spring Creek Township, Tidioute Borough, Triumph Township, Watson Township, and Youngsville Borough.

I recommend that District Court 37-4-03 and its satellite office 37-4-93 be reestablished to serve all of Forest County, encompassing Barnett Township, Green Township, Harmony Township, Hickory Township, Howe Township, Jenks Township, Kingsley Township, Tionesta Township, Tionesta Borough.

  
Honorable Maureen A. Skerda, President Judge  
37<sup>th</sup> Judicial District of Pennsylvania  
Warren and Forest Counties

**Judicial District Summary Worksheet – Reestablishment 2021-2022**

Start by saving the fillable worksheet template locally on your system as a PDF form. Then, open and complete the worksheet in a PDF browser (not a web browser) to ensure all options and functionality are available. Answer the questions by typing or selecting responses. Press TAB or click on a field to advance. Hover the fields for tips and instructions. Save and upload the completed form to SharePoint. Complete one worksheet or one for each county if you are a joint judicial district.

|   |    |                                  |        |                                |              |
|---|----|----------------------------------|--------|--------------------------------|--------------|
| <b>Judicial District Number:</b>  | 37 | <b>County:</b>                   | Warren | <b>Class of County:</b>        | 6            |
| <p>1. List the existing magisterial districts in your judicial district (##-#-##):</p> <p>37-2-01<br/>37-3-01<br/>37-4-01</p>                               |    |                                  |        |                                |              |
| <b>Caseload Analysis</b>  |    |                                  |        |                                |              |
| 2. Average total caseloads:   |    | <i>Avg for Judicial District</i> |        | <i>Avg for Class of County</i> |              |
|   |    | A.                               | 2,380  | B.                             | 3,230        |
| 3. Compare the difference between the caseload average of your judicial district to the class of county.  |    | <i>Difference (2A - 2B)</i>      |        | <i>Ranking</i>                 | <i>Total</i> |
|   |    | -850                             |        | 19th                           | out of 24    |
| 4. Is your judicial district caseload average at the lower end of the caseload range when compared to the other judicial districts in your class of county? |    |                                  |        | No                             |              |
| <b>Proposed Actions</b>   |    |                                  |        |                                |              |
| 5. Are any magisterial districts proposed for reestablishment?  |    |                                  |        |                                | Yes          |
| <p>If YES, list the magisterial districts proposed for reestablishment (no changes).</p> <p>37-2-01<br/>37-3-01<br/>37-4-01</p>                             |    |                                  |        |                                |              |
| 6. Are any magisterial district proposed for realignment?   |    |                                  |        |                                | No           |
| <p>If YES, list the magisterial districts proposed for realignment (changes).</p>   |    |                                  |        |                                |              |
| 7. Are any magisterial districts proposed for elimination?  |    |                                  |        |                                | No           |
| <p>If YES, list the magisterial districts proposed for elimination.</p>   |    |                                  |        |                                |              |



| <b>Additional Workload Factors</b>  |  |
|---|--|
| 8. Do you have a night court operating within the judicial district?  | No   |
| 9. Do you have a central court within your judicial district?   | Yes  |
| 10. Do you have any special programs that will entail effort by the MDJs such as truancy programs or drug, DUI, veteran, or mental health diversion programs?<br><br>If <b>YES</b> , briefly explain the types of programs.<br><br><small>The MDJs are active in several of the Court of Common Pleas initiatives involving problem solving courts. MDJs have also been utilized for Treatment Court, while the treatment court is primarily the responsibility of the Court of Common Pleas, there are inevitably scheduling conflicts that require the assistance of a MDJ. The MDJ actively participate with our high school students in a Youth Court for juvenile offenders as well as truancy programs.</small> | Yes  |
| <b>Final Checklist</b>  |  |
| 11. Was a request for public comment posted?  | Yes  |
| 12. Method of posting - electronic, physical copy, or both?   | Electronic   |
| 13. Were media outlets notified?  | Yes  |
| 14. Were public comments received?  | No   |
| 15. Did you include a copy of the posting and public comments in your submission?   | Yes  |
| 16. Did you complete summary worksheets for all magisterial districts?  | Yes  |
| 17. Did you include your petition and all supporting documentation, if applicable?  | Yes  |
| 18. Did you confer with the MDJs in your county?  | Yes  |
| <b>19. Additional Remarks</b>   |  |
|   |  |
| <b>Verification of Submission</b>   |  |
| 20. Date submitted to AOPC: 2/25/2022   |  |
| 21. President Judge Name: Maureen A. Skerda   |  |
| <p><b>Maureen A. Skerda</b></p> <p>Signature</p>  | <p>Digitally signed by Maureen A. Skerda<br/>Date: 2022.02.25 14:05:22 -05'00'</p> |

## Magisterial District Summary Worksheet - Reestablishment 2021-2022

Start by saving the fillable worksheet template locally on your system as a PDF form. Then, open and complete the worksheets in a PDF browser (not a web browser) to ensure all options and functionality are available. Answer the questions by typing or selecting responses. Press TAB or click on a field to advance. Hover the fields for tips and instructions. Save and upload the completed form to SharePoint.

|   |                                     |                                  |                                |
|---|-------------------------------------|----------------------------------|--------------------------------|
| <b>Magisterial District Court Number:</b>   | 37-2-01                             | <b>County:</b>                   | Warren                         |
| 1. Proposed plan for this magisterial district: Reestablish   |                                     | 2. Effective date: 2/28/2022     |                                |
| <b>Caseload Analysis</b>  |                                     |                                  |                                |
| 3. Average total caseloads:   | <i>Avg for Magisterial District</i> | <i>Avg for Judicial District</i> | <i>Avg for Class of County</i> |
|   | A. 2,579                            | B. 2,380                         | C. 3,230                       |
| 4. Compare the difference between the caseload average of this magisterial district to your judicial district caseload average.   |                                     | <i>Difference (3A - 3B)</i>      | <i>Ranking Total</i>           |
|   |                                     | 198.5                            | 1st out of 3                   |
| 5. Compare the difference between the caseload average of this magisterial district to your class of county caseload average.   |                                     | <i>Difference (3A - 3C)</i>      | <i>% Above/Below</i>           |
|   |                                     | -651.5                           | -21 %                          |
| <p>6. If this magisterial district is at the lower end of the caseload range <b>and</b> you are proposing to <b>reestablish</b> (no changes), please summarize your response from the petition that explains why you are departing from caseload equity.</p> <p>The caseload of Magisterial District Court 37-2-01 is -21% below similar class of county districts. This MDJ Court is located in the City of Warren. It would do a disservice to the Warren County to eliminate this office as it would cause undue hardship to the public.</p>   |                                     |                                  |                                |
| <b>Workload Analysis</b>  |                                     |                                  |                                |
| 7. Average total workloads:   | <i>Avg for Magisterial District</i> | <i>Avg for Judicial District</i> |                                |
|   | A. 23,692                           | B. 18,347                        |                                |
| 8. Compare the difference between the average total workloads of this magisterial district to the judicial district.  |                                     | <i>Difference (7A - 7B)</i>      | <i>% Above/Below</i>           |
|   |                                     | 5,345                            | 29 %                           |
| <p>9. If this magisterial district's average workload is fifteen (15%) percent <i>higher or lower than</i> your judicial district average workload <b>and</b> you are proposing to <b>reestablish</b> this magisterial district, please explain (<i>summarize your response from the petition</i>) why this does not result in an unwarranted inequity among the judges.</p> <p>The workload of Magisterial District Court 37-2-01 is 29% above the average workload for Warren County. This Court is located in the City of Warren which would account for the number of cases. Realignment of municipalities will not fix an imbalance in the workload and cannot overcome the geographical considerations.</p> |                                     |                                  |                                |

| <b>Magisterial District Information</b>  |             |
|--|-------------|
| <p>10. Magisterial District Judge (MDJ) Information:</p> <p style="margin-left: 20px;">Raymond Zydonik</p> <p style="margin-left: 20px;"><i>Magisterial District Judge Name</i>                      <i>Birthdate</i>                      <i>Term Expiration Date</i>                      <i>Mandatory Retirement Date</i></p> |             |
| <p>11. Magisterial District Court Information - Physical Location:</p> <p style="margin-left: 20px;">333 Hickory Street, Warren, PA 16365</p>  |             |
| 12. Is this court within the boundaries of the magisterial district?   | Yes         |
| 13. Is the MDJ's residence within the boundaries of the magisterial district?  | Yes         |
| 14. Are all portions of the magisterial district contiguous?   | Yes         |
| 15. To the best of your knowledge, are there any planned developments such as a mall, highway expansion or gas drilling that will likely cause an increase in the case filings for this office? If YES, please summarize your response below.  | No/Not Sure |
| <p>16. List any police departments located within this magisterial district.</p> <p style="margin-left: 20px;">Warren City Police, Warren County Sheriff's Office, Pennsylvania State Police</p>   |             |
| <p>17. List any major highways within this magisterial district.</p> <p style="margin-left: 20px;">Route 6, Route 62 and Route 948</p>   |             |
| <p>18. List the <b>current</b> municipalities for this magisterial district (alphabetically). For a list, click <a href="#">HERE</a> for Realignment Orders submitted in the past.</p> <p style="margin-left: 20px;">Cherry Grove Twp.<br/>Sheffield Twp.<br/>Warren City</p>  |             |
| 19. Are the <b>proposed</b> municipalities the same as above?<br>If NO, please list all proposed municipalities (alphabetically).  | Yes         |
| <p><b>20. Additional Comments:</b></p><br><br><br>   |             |



## Magisterial District Summary Worksheet - Reestablishment 2021-2022

Start by saving the fillable worksheet template locally on your system as a PDF form. Then, open and complete the worksheets in a PDF browser (not a web browser) to ensure all options and functionality are available. Answer the questions by typing or selecting responses. Press TAB or click on a field to advance. Hover the fields for tips and instructions. Save and upload the completed form to SharePoint.

|   |                                     |                                  |                                |
|---|-------------------------------------|----------------------------------|--------------------------------|
| <b>Magisterial District Court Number:</b>   | 37-3-01                             | <b>County:</b>                   | Warren                         |
| 1. Proposed plan for this magisterial district: Reestablish   |                                     | 2. Effective date: 2/28/2022     |                                |
| <b>Caseload Analysis</b>  |                                     |                                  |                                |
| 3. Average total caseloads:   | <i>Avg for Magisterial District</i> | <i>Avg for Judicial District</i> | <i>Avg for Class of County</i> |
|   | A. 2,448                            | B. 2,380                         | C. 3,230                       |
| 4. Compare the difference between the caseload average of this magisterial district to your judicial district caseload average.   |                                     | <i>Difference (3A - 3B)</i>      | <i>Ranking Total</i>           |
|   |                                     | 68                               | 2nd out of 3                   |
| 5. Compare the difference between the caseload average of this magisterial district to your class of county caseload average.   |                                     | <i>Difference (3A - 3C)</i>      | <i>% Above/Below</i>           |
|   |                                     | -782                             | -25 %                          |
| <p>6. If this magisterial district is at the lower end of the caseload range <b>and</b> you are proposing to <b>reestablish</b> (no changes), please summarize your response from the petition that explains why you are departing from caseload equity.</p> <p>The caseload of Magisterial District Court 37-3-01 is -25% below similar class of county districts. This MDJ Court is utilized frequently for Treatment Court when there is a scheduling conflict with the Court of Common Pleas. The Court recognizes that at this time the caseload is as evenly distributed as possible given the geography of the county.</p>   |                                     |                                  |                                |
| <b>Workload Analysis</b>  |                                     |                                  |                                |
| 7. Average total workloads:   | <i>Avg for Magisterial District</i> | <i>Avg for Judicial District</i> |                                |
|   | A. 17,447                           | B. 18,347                        |                                |
| 8. Compare the difference between the average total workloads of this magisterial district to the judicial district.  |                                     | <i>Difference (7A - 7B)</i>      | <i>% Above/Below</i>           |
|   |                                     | -900                             | -5 %                           |
| <p>9. If this magisterial district's average workload is fifteen (15%) percent <i>higher or lower than</i> your judicial district average workload <b>and</b> you are proposing to <b>reestablish</b> this magisterial district, please explain (<i>summarize your response from the petition</i>) why this does not result in an unwarranted inequity among the judges.</p> <p>The workload of Magisterial District Court 37-3-01 is -5% below the average workload for Warren County, however, eliminating this Court would cause a hardship to the public. The Court recognizes that at this time the caseload is as evenly distributed as possible given the geography of the county.</p> |                                     |                                  |                                |

| <b>Magisterial District Information</b>   |                  |                |                |               |                  |         |                 |                |  |           |  |          |  |
|---|------------------|----------------|----------------|---------------|------------------|---------|-----------------|----------------|--|-----------|--|----------|--|
| <p>10. Magisterial District Judge (MDJ) Information:</p> <p style="margin-left: 20px;">Laura S. Bauer</p> <p style="margin-left: 20px;"><i>Magisterial District Judge Name</i>                      <i>Birthdate</i>                      <i>Term Expiration Date</i>                      <i>Mandatory Retirement Date</i></p>   |                  |                |                |               |                  |         |                 |                |  |           |  |          |  |
| <p>11. Magisterial District Court Information - Physical Location:</p> <p style="margin-left: 20px;">1585 Market Street, Warren, PA 16365</p>   |                  |                |                |               |                  |         |                 |                |  |           |  |          |  |
| 12. Is this court within the boundaries of the magisterial district?  | Yes              |                |                |               |                  |         |                 |                |  |           |  |          |  |
| 13. Is the MDJ's residence within the boundaries of the magisterial district?   | Yes              |                |                |               |                  |         |                 |                |  |           |  |          |  |
| 14. Are all portions of the magisterial district contiguous?  | Yes              |                |                |               |                  |         |                 |                |  |           |  |          |  |
| 15. To the best of your knowledge, are there any planned developments such as a mall, highway expansion or gas drilling that will likely cause an increase in the case filings for this office? If <b>YES</b> , please summarize your response below.   | No/Not Sure      |                |                |               |                  |         |                 |                |  |           |  |          |  |
| <p>16. List any police departments located within this magisterial district.</p> <p style="margin-left: 20px;">Conewango Twp. Police, Warren County Sheriff's Office, Pennsylvania State Police</p>   |                  |                |                |               |                  |         |                 |                |  |           |  |          |  |
| <p>17. List any major highways within this magisterial district.</p> <p style="margin-left: 20px;">Route 6, Route 62, Route 59, Route 957</p>   |                  |                |                |               |                  |         |                 |                |  |           |  |          |  |
| <p>18. List the <b>current</b> municipalities for this magisterial district (alphabetically). For a list, click <a href="#">HERE</a> for Realignment Orders submitted in the past.</p> <table style="width: 100%; margin-left: 20px;"> <tr> <td>Clarendon Boro</td> <td>Pine Grove Twp</td> </tr> <tr> <td>Conewango Twp</td> <td>Sugar Grove Boro</td> </tr> <tr> <td>Elk Twp</td> <td>Sugar Grove Twp</td> </tr> <tr> <td>Farmington Twp</td> <td></td> </tr> <tr> <td>Glade Twp</td> <td></td> </tr> <tr> <td>Mead Twp</td> <td></td> </tr> </table> |                  | Clarendon Boro | Pine Grove Twp | Conewango Twp | Sugar Grove Boro | Elk Twp | Sugar Grove Twp | Farmington Twp |  | Glade Twp |  | Mead Twp |  |
| Clarendon Boro  | Pine Grove Twp   |                |                |               |                  |         |                 |                |  |           |  |          |  |
| Conewango Twp   | Sugar Grove Boro |                |                |               |                  |         |                 |                |  |           |  |          |  |
| Elk Twp   | Sugar Grove Twp  |                |                |               |                  |         |                 |                |  |           |  |          |  |
| Farmington Twp  |                  |                |                |               |                  |         |                 |                |  |           |  |          |  |
| Glade Twp   |                  |                |                |               |                  |         |                 |                |  |           |  |          |  |
| Mead Twp  |                  |                |                |               |                  |         |                 |                |  |           |  |          |  |
| 19. Are the <b>proposed</b> municipalities the same as above?<br>If <b>NO</b> , please list all proposed municipalities (alphabetically).   | Yes              |                |                |               |                  |         |                 |                |  |           |  |          |  |
| <p><b>20. Additional Comments:</b></p><br><br><br>  |                  |                |                |               |                  |         |                 |                |  |           |  |          |  |

## Magisterial District Summary Worksheet - Reestablishment 2021-2022

Start by saving the fillable worksheet template locally on your system as a PDF form. Then, open and complete the worksheets in a PDF browser (not a web browser) to ensure all options and functionality are available. Answer the questions by typing or selecting responses. Press TAB or click on a field to advance. Hover the fields for tips and instructions. Save and upload the completed form to SharePoint.

|  |                                     |                                  |                                |
|--|-------------------------------------|----------------------------------|--------------------------------|
| <b>Magisterial District Court Number:</b>  | 37-4-01                             | <b>County:</b>                   | Warren                         |
| 1. Proposed plan for this magisterial district: Reestablish  |                                     | 2. Effective date: 2/28/2022     |                                |
| <b>Caseload Analysis</b>   |                                     |                                  |                                |
| 3. Average total caseloads:  | <i>Avg for Magisterial District</i> | <i>Avg for Judicial District</i> | <i>Avg for Class of County</i> |
|  | A. 2,114                            | B. 2,380                         | C. 3,230                       |
| 4. Compare the difference between the caseload average of this magisterial district to your judicial district caseload average.  |                                     | <i>Difference (3A - 3B)</i>      | <i>Ranking Total</i>           |
|  |                                     | -266                             | 3rd out of 3                   |
| 5. Compare the difference between the caseload average of this magisterial district to your class of county caseload average.  |                                     | <i>Difference (3A - 3C)</i>      | <i>% Above/Below</i>           |
|  |                                     | -1116                            | -35 %                          |
| <p>6. If this magisterial district is at the lower end of the caseload range <b>and</b> you are proposing to <b>reestablish</b> (no changes), please summarize your response from the petition that explains why you are departing from caseload equity.</p> <p>In the last reestablishment, Magisterial District Court 37-4-01 had the smallest weighted caseload according to the statewide statistical information, the Court achieved a better distribution of cases by increasing its township responsibilities by adding Pleasant Township to its caseload. The Court recognizes that at this time the caseload is as evenly distributed as possible given the geography of the county.</p>  |                                     |                                  |                                |
| <b>Workload Analysis</b>   |                                     |                                  |                                |
| 7. Average total workloads:  | <i>Avg for Magisterial District</i> | <i>Avg for Judicial District</i> |                                |
|  | A. 13,887                           | B. 18,347                        |                                |
| 8. Compare the difference between the average total workloads of this magisterial district to the judicial district.   |                                     | <i>Difference (7A - 7B)</i>      | <i>% Above/Below</i>           |
|  |                                     | -4,460                           | -24 %                          |
| <p>9. If this magisterial district's average workload is fifteen (15%) percent <i>higher or lower than</i> your judicial district average workload <b>and</b> you are proposing to <b>reestablish</b> this magisterial district, please explain (<i>summarize your response from the petition</i>) why this does not result in an unwarranted inequity among the judges.</p> <p>The workload of Magisterial District Court 37-4-01 is -24% below the average workload for Warren County, however, eliminating this Court would cause a hardship to the public. Warren County is a geographically large, rural county and lacks suitable internet capabilities, therefore making the location of this office logical for public access.</p> |                                     |                                  |                                |



| <b>Magisterial District Information</b>  |                  |                  |  |
|--|------------------|------------------|--|
| <b>10. Magisterial District Judge (MDJ) Information:</b><br><div style="display: flex; justify-content: space-between; align-items: flex-start; margin-top: 10px;"> <div style="text-align: center; width: 25%;"> <p><b>Todd Woodin</b></p> <p><i>Magisterial District Judge Name</i></p> </div> <div style="text-align: center; width: 25%;"> <p>_____</p> <p><i>Birthdate</i></p> </div> <div style="text-align: center; width: 25%;"> <p>_____</p> <p><i>Term Expiration Date</i></p> </div> <div style="text-align: center; width: 25%;"> <p>_____</p> <p><i>Mandatory Retirement Date</i></p> </div> </div> |                  |                  |  |
| <b>11. Magisterial District Court Information - Physical Location:</b><br><p style="margin-left: 40px;">37 Railroad Street, Youngsville, PA 16371</p>  |                  |                  |  |
| 12. Is this court within the boundaries of the magisterial district?   | Yes              |                  |  |
| 13. Is the MDJ's residence within the boundaries of the magisterial district?  | Yes              |                  |  |
| 14. Are all portions of the magisterial district contiguous?   | Yes              |                  |  |
| 15. To the best of your knowledge, are there any planned developments such as a mall, highway expansion or gas drilling that will likely cause an increase in the case filings for this office? If <b>YES</b> , please summarize your response below.  | No/Not Sure      |                  |  |
| <b>16. List any police departments located within this magisterial district.</b><br><p style="margin-left: 40px;">Youngsville Police Department, Warren County Sheriff's Office, Pennsylvania State Police</p>   |                  |                  |  |
| <b>17. List any major highways within this magisterial district.</b><br><p style="margin-left: 40px;">Route 6, Route 27, Route 426, Route 957</p>  |                  |                  |  |
| <b>18. List the <u>current</u> municipalities for this magisterial district (alphabetically). For a list, click <a href="#">HERE</a> for Realignment Orders submitted in the past.</b>   |                  |                  |  |
| Bear Lake Boro   | Limestone Twp    | Triumph Twp      |  |
| Brokenstraw Twp  | Pittsfield Twp   |                  |  |
| Columbus Twp   | Pleasant Twp     | Watson Twp       |  |
| Deerfield Twp  | Sourthwest Twp   | Youngsville Boro |  |
| Eldred Twp   | Spring Creek Twp |                  |  |
| Freehold Twp   | Tidioute Boro    |                  |  |
| 19. Are the <b>proposed</b> municipalities the same as above?<br>If <b>NO</b> , please list all proposed municipalities (alphabetically).  | Yes              |                  |  |
| <b>20. Additional Comments:</b>  |                  |                  |  |
|  |                  |                  |  |

**Judicial District Summary Worksheet – Reestablishment 2021-2022**

Start by saving the fillable worksheet template locally on your system as a PDF form. Then, open and complete the worksheet in a PDF browser (not a web browser) to ensure all options and functionality are available. Answer the questions by typing or selecting responses. Press TAB or click on a field to advance. Hover the fields for tips and instructions. Save and upload the completed form to SharePoint. Complete one worksheet or one for each county if you are a joint judicial district.

|   |    |                                  |          |                                |              |
|---|----|----------------------------------|----------|--------------------------------|--------------|
| <b>Judicial District Number:</b>  | 37 | <b>County:</b>                   | Forest   | <b>Class of County:</b>        | 8            |
| <p>1. List the existing magisterial districts in your judicial district (##-#-##):</p> <p style="margin-left: 20px;">37-4-03<br/>37-4-93</p>                |    |                                  |          |                                |              |
| <b>Caseload Analysis</b>  |    |                                  |          |                                |              |
| 2. Average total caseloads:   |    | <i>Avg for Judicial District</i> |          | <i>Avg for Class of County</i> |              |
|   |    | A. 1,537                         | B. 1,813 |                                |              |
| 3. Compare the difference between the caseload average of your judicial district to the class of county.  |    | <i>Difference (2A - 2B)</i>      |          | <i>Ranking</i>                 | <i>Total</i> |
|   |    | -276                             |          | 4th                            | out of 6     |
| 4. Is your judicial district caseload average at the lower end of the caseload range when compared to the other judicial districts in your class of county? |    |                                  |          | Yes                            |              |
| <b>Proposed Actions</b>   |    |                                  |          |                                |              |
| 5. Are any magisterial districts proposed for reestablishment?  |    |                                  |          |                                | Yes          |
| <p>If YES, list the magisterial districts proposed for reestablishment (no changes).</p> <p style="margin-left: 20px;">37-4-03<br/>37-4-93</p>              |    |                                  |          |                                |              |
| 6. Are any magisterial district proposed for realignment?   |    |                                  |          |                                | No           |
| <p>If YES, list the magisterial districts proposed for realignment (changes).</p>   |    |                                  |          |                                |              |
| 7. Are any magisterial districts proposed for elimination?  |    |                                  |          |                                | No           |
| <p>If YES, list the magisterial districts proposed for elimination.</p>   |    |                                  |          |                                |              |

| <b>Additional Workload Factors</b>  |    |
|---|----|
| 8. Do you have a night court operating within the judicial district?  | No |
| 9. Do you have a central court within your judicial district?   | No |
| 10. Do you have any special programs that will entail effort by the MDJs such as truancy programs or drug, DUI, veteran, or mental health diversion programs?<br>If YES, briefly explain the types of programs. | No |

| <b>Final Checklist</b>   |            |
|--|------------|
| 11. Was a request for public comment posted?                                       | Yes        |
| 12. Method of posting - electronic, physical copy, or both?                        | Electronic |
| 13. Were media outlets notified?   | Yes        |
| 14. Were public comments received?   | No         |
| 15. Did you include a copy of the posting and public comments in your submission?  | Yes        |
| 16. Did you complete summary worksheets for all magisterial districts?             | Yes        |
| 17. Did you include your petition and all supporting documentation, if applicable? | Yes        |
| 18. Did you confer with the MDJs in your county?                                   | Yes        |

**19. Additional Remarks**

| <b>Verification of Submission</b>           |
|---|
| 20. Date submitted to AOPC: 2/25/2022       |
| 21. President Judge Name: Maureen A. Skerda |

|  |  |
|--|--|
| <p><b>Maureen A. Skerda</b></p> <p>Signature</p> | <p>Digitally signed by Maureen A. Skerda<br/>Date: 2022.02.25 14:07:33 -05'00'</p> |
|--|--|



## Magisterial District Summary Worksheet - Reestablishment 2021-2022

Start by saving the fillable worksheet template locally on your system as a PDF form. Then, open and complete the worksheets in a PDF browser (not a web browser) to ensure all options and functionality are available. Answer the questions by typing or selecting responses. Press TAB or click on a field to advance. Hover the fields for tips and instructions. Save and upload the completed form to SharePoint.

|  |                                     |                                  |   |
|--|-------------------------------------|----------------------------------|---|
| <b>Magisterial District Court Number:</b>  | 37-4-03                             | <b>County:</b>                   | Forest <input type="button" value="v"/> |
| 1. Proposed plan for this magisterial district: Reestablish <input type="button" value="v"/>   |                                     | 2. Effective date: 2/28/2022     |   |
| <b>Caseload Analysis</b>   |                                     |                                  |   |
| 3. Average total caseloads:  | <i>Avg for Magisterial District</i> | <i>Avg for Judicial District</i> | <i>Avg for Class of County</i>          |
|  | A. 1,537                            | B. 1,537                         | C. 1,813                                |
| 4. Compare the difference between the caseload average of this magisterial district to your judicial district caseload average.  |                                     | <i>Difference (3A - 3B)</i>      | <i>Ranking Total</i>                    |
|  |                                     | 0                                | 1st out of 1                            |
| 5. Compare the difference between the caseload average of this magisterial district to your class of county caseload average.  |                                     | <i>Difference (3A - 3C)</i>      | <i>% Above/Below</i>                    |
|  |                                     | -276                             | -15 %                                   |
| <p>6. If this magisterial district is at the lower end of the caseload range <b>and</b> you are proposing to <b>reestablish</b> (no changes), please summarize your response from the plan that explains why you are departing from caseload equity.</p> <p style="margin-left: 40px;">Forest County has one MDJ that is responsible for the Magisterial District.<br/>This district includes a satellite office, 37-4-93, to cover the large, rural county.</p> |                                     |                                  |   |
| <b>Workload Analysis</b>   |                                     |                                  |   |
| 7. Average total workloads:  | <i>Avg for Magisterial District</i> | <i>Avg for Judicial District</i> |   |
|  | A. 8,966                            | B. 8,966                         |   |
| 8. Compare the difference between the average total workloads of this magisterial district to the judicial district.   |                                     | <i>Difference (7A - 7B)</i>      | <i>% Above/Below</i>                    |
|  |                                     | 0                                | 0 %                                     |
| <p>9. If this magisterial district's average workload is fifteen (15%) percent <i>higher or lower than</i> your judicial district average workload <b>and</b> you are proposing to <b>reestablish</b> this magisterial district, please explain (<i>summarize your response from the plan</i>) why this does not result in an unwarranted inequity among the judges.</p>   |                                     |                                  |   |

## Magisterial District Information

10. Magisterial District Judge (MDJ) Information:

Daniel L. Miller

*Magisterial District Judge Name*

*Birthdate*

*Term Expiration Date*

*Mandatory Retirement Date*

11. Magisterial District Court Information - Physical Location:

271 Oak Lane, Marienville, PA 16239

12. Is this court within the boundaries of the magisterial district?

Yes



13. Is the MDJ's residence within the boundaries of the magisterial district?

Yes



14. Are all portions of the magisterial district contiguous?

Yes



15. To the best of your knowledge, are there any planned developments such as a mall, highway expansion or gas drilling that will likely cause an increase in the case filings for this office? If **YES**, please summarize your response below.

No/Not Sure



16. List any police departments located within this magisterial district.

Pennsylvania State Police, Forest County Sheriff's Office

17. List any major highways within this magisterial district.

Route 66, Route 666, Route 948, and Route 899

18. List the **current** municipalities for this magisterial district (alphabetically). For a list, click [HERE](#) for Realignment Orders submitted in the past.

Barnett Township  
 Green Township  
 Harmony Township  
 Hickory Township  
 Howe Township  
 Jenks Township  
 Kingsley Township  
 Tionesta Borough  
 Tionesta Township

19. Are the **proposed** municipalities the same as above?  
 If **NO**, please list all proposed municipalities (alphabetically).

Yes

20. Additional Comments:



JUDICIAL CHAMBERS  
COURT OF COMMON PLEAS  
THIRTY-SEVENTH JUDICIAL DISTRICT OF PENNSYLVANIA  
FOREST COUNTY WARREN COUNTY

MAUREEN A. SKERDA  
PRESIDENT JUDGE

GREGORY J. HAMMOND  
JUDGE

PAUL H. MILLIN  
SENIOR JUDGE

WARREN COUNTY COURTHOUSE  
204 FOURTH AVENUE  
WARREN, PA 16365  
Telephone: (814) 728-3530  
Fax: (814) 728-3452  
[www.warrenforestcourt.org](http://www.warrenforestcourt.org)

**REESTABLISHMENT PLAN**  
**THIRTY-SEVENTH JUDICIAL DISTRICT OF PENNSYLVANIA**  
**MAGISTERIAL DISTRICT COURTS 37-3-01, 37-4-01, 37-2-01, 37-4-03, 37-4-93**  
**WARREN COUNTY AND FOREST COUNTY**

Pursuant to 42 Pa.C.S.A. 1503, following the federal decennial census, the Court is required to evaluate and reestablish the number, boundaries, and classes of magisterial districts within each judicial district.

The 37<sup>th</sup> Judicial District of Pennsylvania is composed of Warren County and Forest County. Warren County has three (3) magisterial districts and Forest County has two (2) magisterial districts with one MDJ. After evaluation, the Court is proposing to reestablish those five (5) magisterial districts with no changes.

The reestablishment plan for the 37<sup>th</sup> Judicial District of Pennsylvania will be available for thirty (30) days to allow for public comment. The plan can be viewed on the 37<sup>th</sup> Judicial District's website at [www.warrenforestcourt.org](http://www.warrenforestcourt.org). The plan will also be available in each Magisterial District Court office and the District Court Administrator's Office at 204 Fourth Avenue, Warren, Pennsylvania, 16365.

The thirty (30) days public comment period will expire at the close of business on February 28, 2022. Public comments regarding the reestablishment plan can be sent to the following address:

Court Administration  
204 Fourth Avenue  
Warren, PA 16365  
ATTN: Jessica A. Arnold, District Court Administrator

Public comments can also be e-mailed to [jarnold@warrencountypa.gov](mailto:jarnold@warrencountypa.gov). All public comments must be in writing and must include the full name and address of the sender.

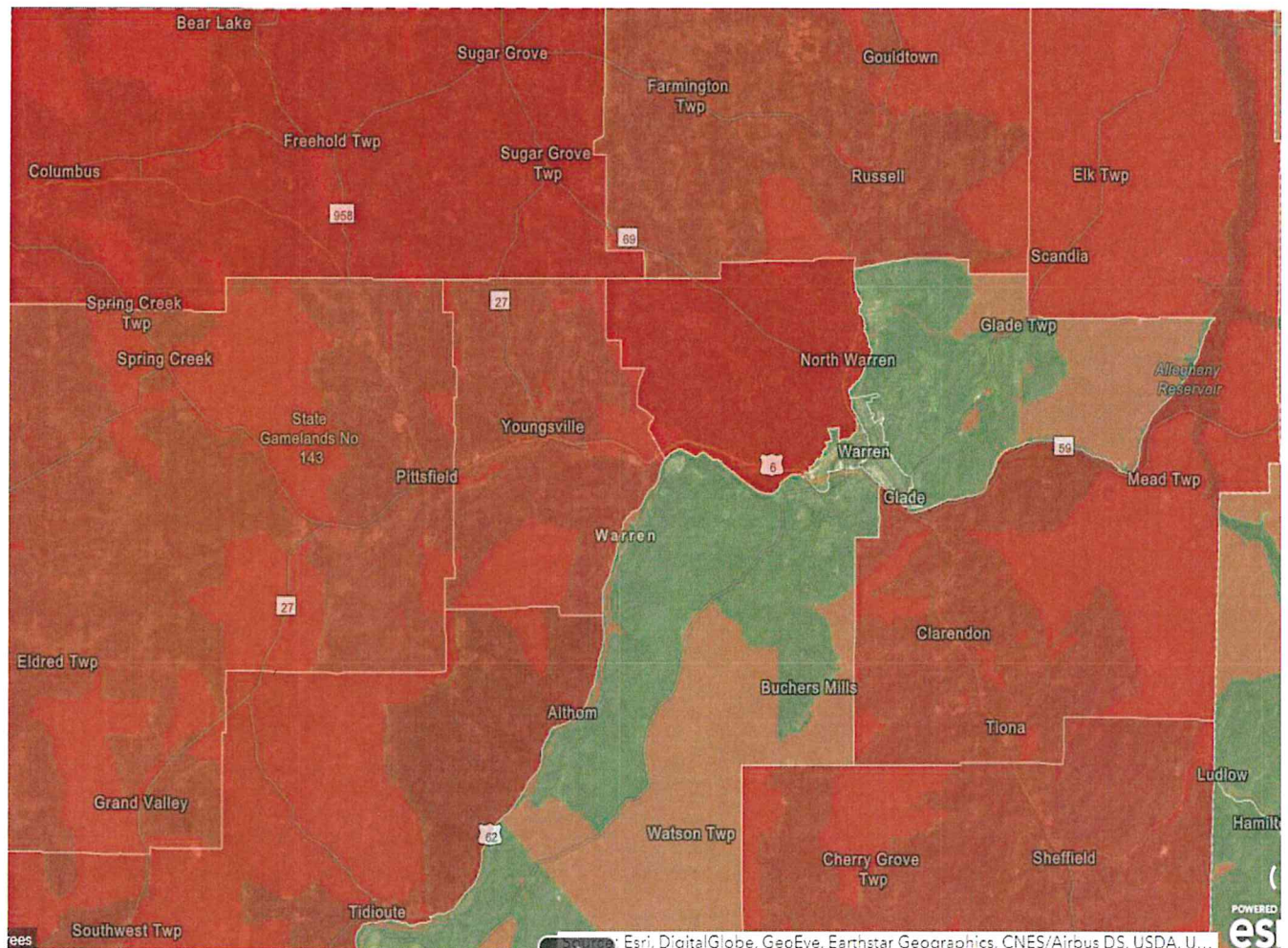
The reestablishment plan will be submitted sometime after February 28, 2022, to the Administrative Office of Pennsylvania Courts for review.



American Community Survey – High Poverty Communities 20% or More of Households below poverty level: Cherry Grove Twp, Sheffield, Saybrook

Red indicates that: usage – 75% or more of devices connect to Microsoft updates/services via fixed broadband download speeds below 25 Mbps

American Community Survey – 25% or more of households report no internet access



Legend

| Level        | Indicator of Broadband Need  | Yes | No          | No Data |
|--------------|--|-----|-------------|---------|
| County       | Speed Tests - M-Lab Median Speeds Fixed Broadband Below 25/3 Mbps  | Red | Light Green | Grey    |
|              | Usage - 75% or More of Devices Connect to Microsoft Updates/Services via Fixed Broadband Download Speeds below 25 Mbps | Red | Light Green | Grey    |
| Census Tract | Speed Tests - Ookla Median Speeds Fixed Broadband Below 25/3 Mbps  | Red | Light Green | Grey    |
|              | American Community Survey - 25% or More of Households Report No Internet Access  | Red | Light Green | Grey    |
|              | American Community Survey - 25% or More of Households Report No Computer, Smartphone or Tablet                         | Red | Light Green | Grey    |
| Census Block | FCC Form 477 – No Provider Reports Consumer Fixed Broadband Services at 25/3 Mbps                                      | Red | Light Green | NA      |

Minority Serving Institutions (NTIA MSIs)

-  AANAPISI (Asian American and American Pacific Islander Serving Institutions)

- Speed Tests - Ookla Median Speeds Fixed Broadband Below 25/3 Mbps (Census Tract Level) ...
- American Community Survey - 25% or More of Households Report No Internet Access (Census Tract Level) ...
- American Community Survey - 25% or More of Households Report No Computer, Smartphone or Tablet (Census Tract Level) ...
- FCC Form 477 - No Provider Reports Consumer Fixed Broadband Services at 25/3 Mbps (Census Block Level) ...